



# Yarra Valley Lodge



YARRA VALLEY  
LODGE



# Yarra Valley Lodge

LOCATED IN THE BEAUTIFUL HERITAGE ESTATE, THE GATEWAY TO ONE OF AUSTRALIA'S PREMIER WINE DISTRICTS.

Located at the gateway to the stunning Yarra Valley, Yarra Valley Lodge is only 45 minutes from Melbourne and offers guests the very best in accommodation, food, beverages, meetings and events.

Combine work and play and easily transfer from the function to the fairway with two 18-hole championship golf courses next door, including the Heritage Golf & Country Club.

The surrounding region is also full of hidden surprises and unique experiences, as well as some of Victoria's most visited attractions, restaurants, wineries and distilleries.

## FACILITIES & SERVICES

Set upon 1,000 acres of picturesque gardens and meandering pathways within the prestigious Heritage Estate, we offer both the setting to celebrate and the space to do business.

If teeing off at one of our two neighbouring world-class golf courses is not your cup of tea, take advantage of our onsite partner, Heritage Retreat & Day Spa. The facility offers everything from traditional therapeutic spa treatments to a fully equipped gymnasium, slick indoor heated 20-metre swimming pool and floodlit tennis courts.



### Meeting Rooms

8 variable meeting and event rooms all with natural light and state-of-the-art AV and multi-media equipment.

---

### Pillarless Ballroom

Provides uninterrupted views and a highly flexible space.

---

### Unique Spaces

Numerous spaces available to suit both formal and informal meetings/gatherings.

---

### Team Building

Group activities, theming and entertainment are fully customised by the events team.

---

### Complimentary Wi-Fi

High speed internet is provided so all guests can be connected during their stay.

---

## FUNCTION ROOM SPACES



### Conservatory Terrace

Savour the outdoors on our Conservatory Terrace. With a full styling, setup and pack-down package available for lunch or evening events, this is sure to wow your guests, whether they are local or if they have travelled from afar.

Best enjoyed in the warmer months, this offering includes napery, centrepieces, ambient festoon lighting, candles and charger plates, in addition to custom table menus and seat coverings. Don't worry though – we are in Melbourne, so we've got a wet weather backup sorted for you too, with the option to move your event into the Conservatory should the weather be looking not so amenable to outdoor dining.

Choose your menu and beverage package and we'll look after the rest!

Minimum numbers and charges apply, speak to our team about elevating your experience with us at Yarra Valley Lodge to incorporate our newest offering with Terrace Dining.

## FUNCTION ROOM SPACES



### Conservatory

#### Lunch & Dinner

Experience dining with a difference in the Conservatory as you take in sweeping, panoramic views of the open-air Conservatory Terrace and lush, adjoining gardens, offering the perfect setting for a celebration and the space to conduct business.

## MEETINGS & EVENTS

Yarra Valley Lodge is the perfect location to host memorable conferences, meetings and events.

Choose from 8 flexible spaces with the capacity to cater for up to 400 guests. All styles of set-up with extensive break-out and pre-function areas are available, complemented by state-of-the-art audio-visual facilities, stylish surroundings and natural light.

For all meetings and events, we create bespoke dining and beverage menus, catering to all tastes and dietary requirements. Our experienced team will ensure your next event is a complete success.



## FUNCTION ROOM SPACES

### Pre-function Area

Welcome guests onto the spacious and pillar-free pre-function area – the perfect space for exhibits, catering, recitation and welcome drinks.

---

### Marmion Ballroom

The exquisite Marmion Ballroom is our largest event space and can be divided into two individual rooms – Marmion I and Marmion II.

In its full capacity, this venue space can seat approximately 200 people for dinner, 152 guests cabaret-style or 325 theatre-style. Ideal for dinners, conferences and large-scale functions, this elegant, pillar-free ballroom also offers a private, pre-function area and access to our Conservatory Terrace – perfect for a breakout area or pre-dinner drinks.

---

## FUNCTION ROOM SPACES



### Birrarung

Dynamic and highly configurable, Birrarung offers a versatile space suitable for a variety of conferences, meetings and social events.

Beautifully presented with floor-to-ceiling windows, ushering in a flood of natural light, Birrarung offers built-in audio-visual systems and seats 100 theatre-style, 64 cabaret-style or 90 guests for dinner.



### Bella Private Dining Room

Versatile and dynamic, light-filled and lovely, the Bella Private Dining Room boasts access to an outdoor courtyard and is the ideal setting for small meetings, a breakout area, or a private lunch and dinner.

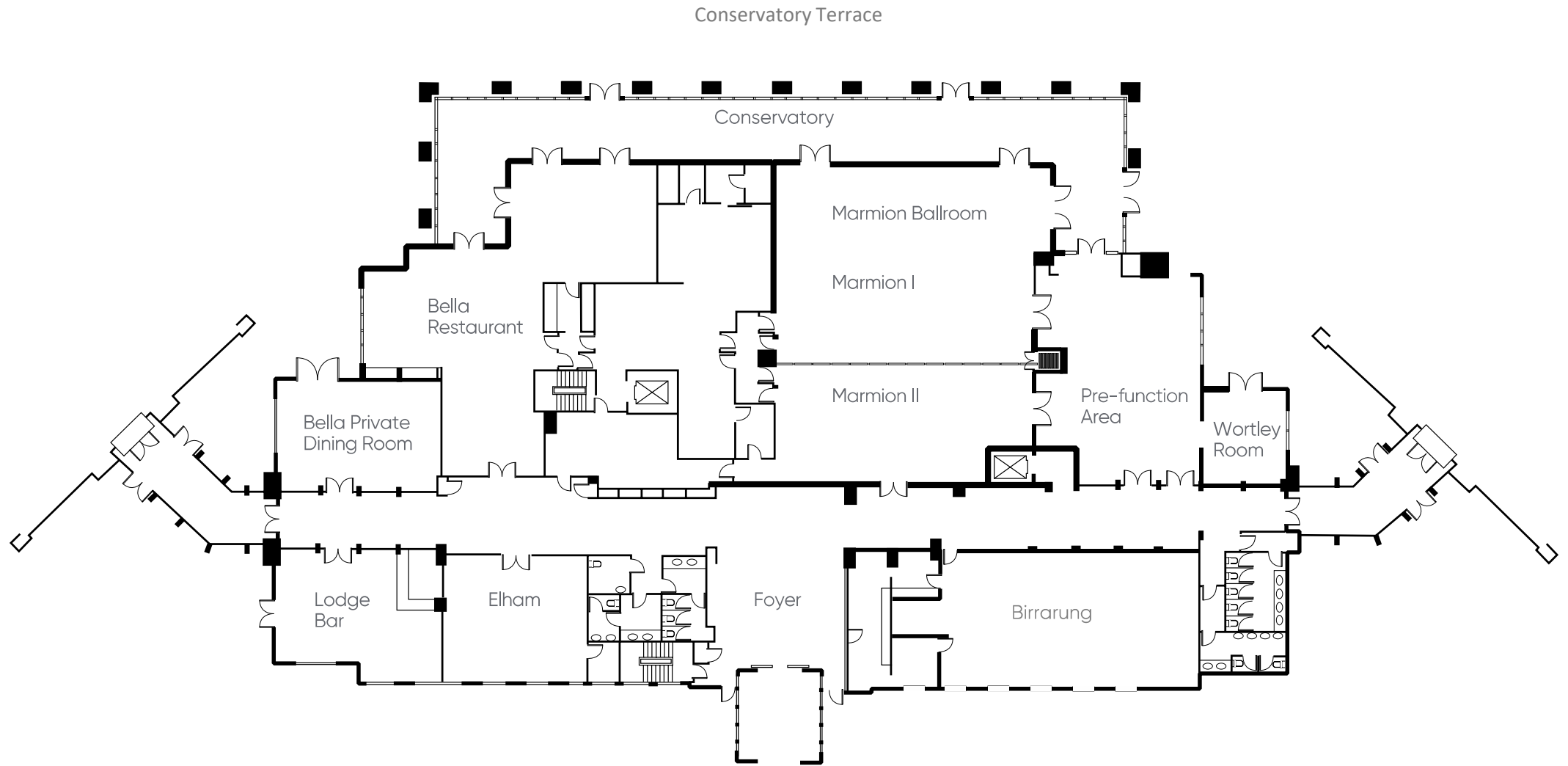
The venue space can accommodate up to 46 delegates theatre-style and 24 guests in a U-shape setting.



### Elham Room

Stylish and intimate, the Elham Room is an ideal venue space for smaller meetings, conferences, or seminars. Featuring a concealed doorway, the Elham room easily doubles as a breakout area if required. The cosy venue space has the ability to host 50 delegates in a theatre-style setting or up to 20 in a U-shape configuration.

# FLOOR PLAN





# CAPACITY CHART

	Area m <sup>2</sup>	Theatre	Classroom	U-Shape	Boardroom	Banquet	Cocktail	Cabaret	Dinner Dance
<b>Marmion Room</b>	308	325	150	60	70	200	400	152	180
<b>Marmion Room One</b>	200	150	100	45	60	110	200	99	80
<b>Marmion Room 2</b>	108	80	50	32	32	50	150	36	150
<b>Conservatory</b>	206	-	-	-	-	90	200	-	-
<b>Conservatory Terrace</b>	300	-	-	-	-	80	200	-	-
<b>Birrarung</b>	156	100	77	50	50	90	150	64	70
<b>Elham Room</b>	62	50	27	18	18	40	60	32	-
<b>Bella Private Dining Room</b>	66	46	18	24	24	40	50	32	-
<b>Wortley</b>	31	25	15	12	12	12	-	8	-

# CONFERENCE DAY MENU

## Inclusions

Selection of herbal teas and Nespresso coffee served for arrival, morning tea, lunch, and afternoon tea.  
Morning & afternoon tea breaks served with fresh fruit.  
Lunch served with water & a selection of soft drinks.

## Monday & Thursday

### Morning Tea

Sago, mango and coconut pudding  
Frittata, fetta, mint

### Mediterranean Lunch

Braised lamb, halloumi, falafel, flat bread, garlic  
yoghurt, lettuce, hummus, Greek salad, mint,  
freekeh

### Afternoon Tea

Butter chicken party pies  
Portuguese tarts

## Tuesday, Friday & Sunday

### Morning Tea

House made scones, cream and berries  
Pumpkin and fetta tart

### Mexican Lunch

Flame-grilled chicken, spiced beans, tacos, tortilla,  
sour cream, salsa, avocado, lettuce, tomato,  
cucumber, grilled corn salad, rice, chilli, spring onion,  
lime, coriander, mint

### Afternoon Tea

Macadamia shortbread  
Smoked salmon and cream cheese finger sandwiches

## Wednesday & Saturday

### Morning Tea

Ham and cheese croissant  
Greek yoghurt, granola, compote

### Yarra Valley Farmer's Lunch

Produce from Little Creek Cattle's Smoke House, local  
cheeses and freshly baked local sourdough, chef  
selection salads and condiments

### Afternoon Tea

Pain au chocolat  
Goats curd tart

---

## \*Hot food upgrades

Pulled pork, achiote and roasted apple 16pp  
Smoked beef brisket, gravy 18pp

Tandoori chicken, jasmine rice 16pp

Braised chickpeas, turmeric, native herbs 14pp  
Chilli con carne 14pp

---

Please note, the additional cost applies for all attendees. While utmost care is taken to ensure allergens are avoided when required, due to presence of these items in our kitchen we cannot guarantee total absence.

\*available daily, minimum numbers may apply.





## BBQ DINNER MENU

**\$89.00 pp**

Ideal for informal gatherings with all your BBQ favourites.

### Salads & Cold Item

Texas slaw

Crumbled fetta, burnt onion jam, dressed leaves

Potato salad, jalapeno, sour cream

Fresh seasonal fruit platter

### From the BBQ

BBQ pork ribs

Local Cornish snags

Tandoori chicken

Grilled corn with chipotle mayo

Selection of bread and condiments

### Desserts

Lamingtons, churros

Fresh seasonal fruit

---

### Additional Items

Selection of local cheeses - \$12 per person

Selection of charcuterie - \$13 per person

While utmost care is taken to ensure allergens are avoided when required, due to presence of these items in our kitchen we cannot guarantee total absence.



## SHARED STYLE DINNER MENU

**\$95.00 pp**

Full table service, 3-course dinner with a selection of locally sourced produce with candles and dim lighting.

### To start cold items – choice of three

Toasted cornbread, whipped ricotta, honey

Cold smoked barramundi, Mt Zero lemon pressed EVO, sea greens

Coal-roasted baba ghanoush, pita bread

Halloumi, Vyvyan's honey

Pulled beef brisket, oregano, cranberry

Sticky lamb ribs, smoked labneh

### Substantial hot items – choice of two

Little Creek Cattle rib eye, potato puree, chimi churri

12-hour braised Loddon Valley lamb shoulder, native hebs

Flame-grilled chicken, gochujang, toasted sesame

Handmade gnocchi, fetta, edamame, asparagus

Market fish, salsa verde, lemon

Roast pork belly, apple slaw

### Dessert

Chef selection dessert

---

### Sides – choice of two

Crumbled fetta, burnt onion jam, dressed leaves

Duck fat potatoes, confit garlic, rosemary salt

Freekeh salad, preserved lemon, puffed grains

Spiced corn ribs, chipotle mayo, coriander

Charred greens, almond, lemon

While utmost care is taken to ensure allergens are avoided when required, due to presence of these items in our kitchen we cannot guarantee total absence.



## ALTERNATE DROP DINNER SELECTION

**\$90.00 pp 2 Courses**  
**\$105.00 pp 3 Courses**

### Entrees

Loddon Valley lamb shoulder, charred eggplant, dukkah

BBQ pork ribs, Texas slaw

Handmade gnocchi, fetta, almond, lemon

Alpine salmon, edamame, goats cheese

Confit duck leg, local berries, wilted greens

### Mains - \$6 surcharge

Yarra Valley pork cutlet, caper butter, potato puree

Little Creek scotch fillet, crispy potatoes, parmesan, lime, chilli

Spinach and ricotta cannelloni, Napoli

Market fish, spiced chickpea, preserved lemon

Portuguese chicken, dressed leaves, orange, mint

### Shared sides \$6 per person – choice of two

Crumbled fetta, burnt onion jam, dressed leaves

Duck fat potatoes, confit garlic, rosemary salt

Freekeh salad, preserved lemon, puffed grains

Spiced corn ribs, chipotle mayo, coriander

Charred greens, almond, lemon

### Desserts – choice of two

'Cuvee Noir' chocolate tart, cherry

Tiramisu, coffee, amaretto

Lemon tart, pepperberry meringue

Pavlova, mango, passionfruit, spiced rum



# COCKTAIL DINNER MENU

3 hours \$60.00pp | 8 canapes (4 selections) and 2 substantials\*  
4 hours \$80.00pp | 10 canapes (5 selections) and 3 substantials  
5 hours \$90.00pp | 12 canapes (6 selections) and 3 substantials

*\*\*Must be paired with a food station*

## Canapes

Toasted crumpet, crème fraiche, Buxton trout caviar

Smoked eggplant cornet, black sesame

Sweet potato empanada, garlic yoghurt

Prawn cigar, sweet chilli

Smokey bacon and cheese arancini

Jalapeno croquette

Beef tartare, truffle mayo

House made nduja sausage rolls

## Substantial

Coal grilled chicken satay, toasted coconut

Prawn and avocado, toasted milk bun

Confit duck crepe, cucumber, hoisin

Kangaroo brochettes, lemon gum, pepperberry

Sticky pork belly bao

---

**Oyster Station \$35.00pp** | Freshly shucked oysters served with Buxton trout roe, Tabasco, lemon and selection of dressings

**Charcuterie Station \$30.00pp** | Local pastrami, prosciutto di Parma, bresaola and sopressa salami, local and imported cheese served with poached quince, lavosh and local sourdough

**Paella Station \$25.00pp** | Coldstream butcher's chorizo, Mt Martha mussels, prawns, saffron rice, mojo verde

**Aussie Dessert Station \$25.00pp** | Mini pavs with local berries and vanilla cream, 'Lamington' ice cream cones, 'Cuvee Chocolate' Gaytime truffles

While utmost care is taken to ensure allergens are avoided when required, due to presence of these items in our kitchen we cannot guarantee total absence.

## DINING AND DRINKING

In a setting prized for its natural beauty, striking vineyards and bountiful produce, Yarra Valley Lodge takes full advantage.

Its team of chefs cleverly craft a range of seasonal and corporate events menus, showcasing the freshest local, farm-to-table ingredients.

Breakfast is an indulgent experience with a delicious buffet on offer at Bella.

Open from midday every day, The Lodge Bar offers all-day dining in a relaxed environment with an outdoor terrace. It also makes for the perfect spot for an evening nightcap.

For dinner on Friday & Saturday nights, book a table at Pop Up at Bella, where Head Chef Steve Scambler has designed and sourced local ingredients to reflect the seasons.

Prefer to indulge in a delicious meal from the comfort of your own room? All-day dining room service menu, allowing you to enjoy a tasty meal or snack delivered right to your door.



### Pop Up at Bella

#### Celebrating the Season

On Friday and Saturday nights, our Head Chef, Steve Scambler, has designed a 4-course shared menu with locally sourced ingredients to reflect the seasons.

Think Yarra Valley pork, vibrant heirloom veg and artisanal cheeses from the dairies that dot the Valley, perfectly paired with the best drops from the region, all wrapped gently in a cosy and relaxed ambience.

---

### The Lodge Bar

Whether you're staying with us or enjoying the estate, we look forward to welcoming you. Open from midday every day, the Lodge Bar offers a relaxed environment with an outdoor terrace.

Our full menu caters to all tastes, with the opportunity for larger groups to be accommodated in our private dining area. A great place to catch up with friends and family to enjoy an informal drink or a meal together.

---



# BEVERAGE PACKAGES

From \$35.00 pp

## Standard

Including a selection of white, sparkling and red wines, cider, local beer & light beer  
Orange juice and soft drinks

2 hours \$35.00  
3 hours \$45.00  
4 hours \$55.00  
5 hours \$65.00

## Deluxe

Including a mid-range selection of white, sparkling and red wines, cider, local beer, international beer & light beer  
Orange juice and soft drinks

2 hours \$45.00  
3 hours \$55.00  
4 hours \$65.00  
5 hours \$75.00

## Premium

Including a high range selection of sparkling, white and red wines, cider, two local beer, international beer & light beer  
Orange juice and soft drinks

2 hours \$55.00  
3 hours \$65.00  
4 hours \$75.00  
5 hours \$85.00





## ACCOMMODATION

Set on 1000 acres of land within the grounds of the Heritage Golf and Country Club, Yarra Valley Lodge is surrounded by breathtaking scenery and manicured grounds.

Take your pick from 102 spacious and well-appointed guest rooms. Step out of your ground floor guestroom onto your own garden terrace or enjoy spectacular views from the private balcony of your upper floor hideaway.

There's a view from every angle of the hotel and you can choose from estate vistas in our Lodge rooms or endless landscapes overlooking the fairways from our Golf View rooms.

## ROOM FEATURES

### Guest Services

- 24-hour reception
  - Secure undercover car parking
  - Contactless check in and check out
- 

### Separate Bath and Shower

Each guestroom features a well-appointed bathroom.

---



### Complimentary Wi-Fi

It's fast and free and keeps guests connected to the outside world.

---

### Tea and Coffee Facilities

Complimentary tea and coffee making facilities are provided in each guestroom.

---

### Air Conditioner

Each guestroom has its own individually controlled air-conditioner and heating.

---

### LCD TV

An essential comfort to watch the news at the start of the day and a movie at the end. Includes chrome casting from all guestrooms.

---

### Writing Desk

A dedicated desk and chair to catch up on work in between meetings and activities.

---



YARRA VALLEY  
LODGE

YARRA VALLEY LODGE

2 Heritage Ave, Chirnside Park, Victoria, 3116, Australia

ENQUIRIES

+61 3 9760 3333

[events@yarravalleylodge.com](mailto:events@yarravalleylodge.com)

[www.yarravalleylodge.com](http://www.yarravalleylodge.com)